

## Senior Project - (3)Net

### Network Monitoring Extension

Senior Project: 2001-2002

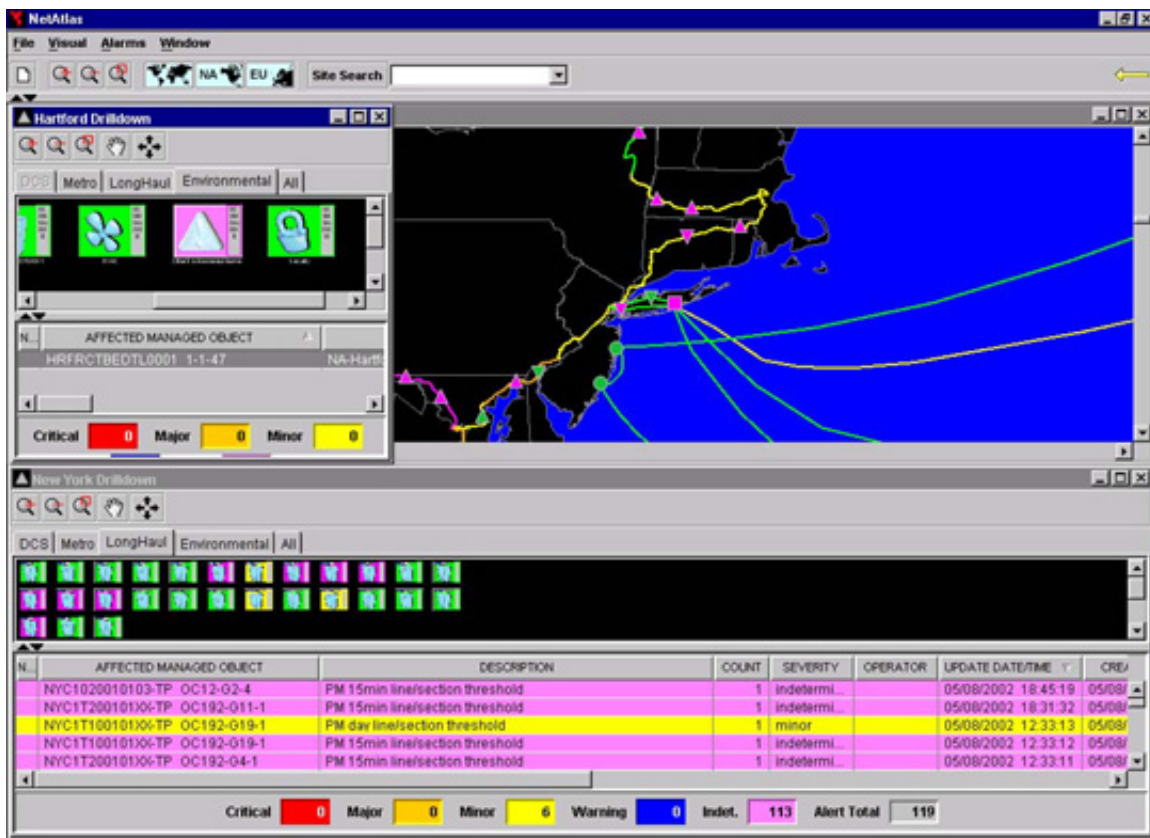
Danny Ace, [Aaron Blondeau](#), Amy Kerrigan, Vincent LaFollette and William Watts

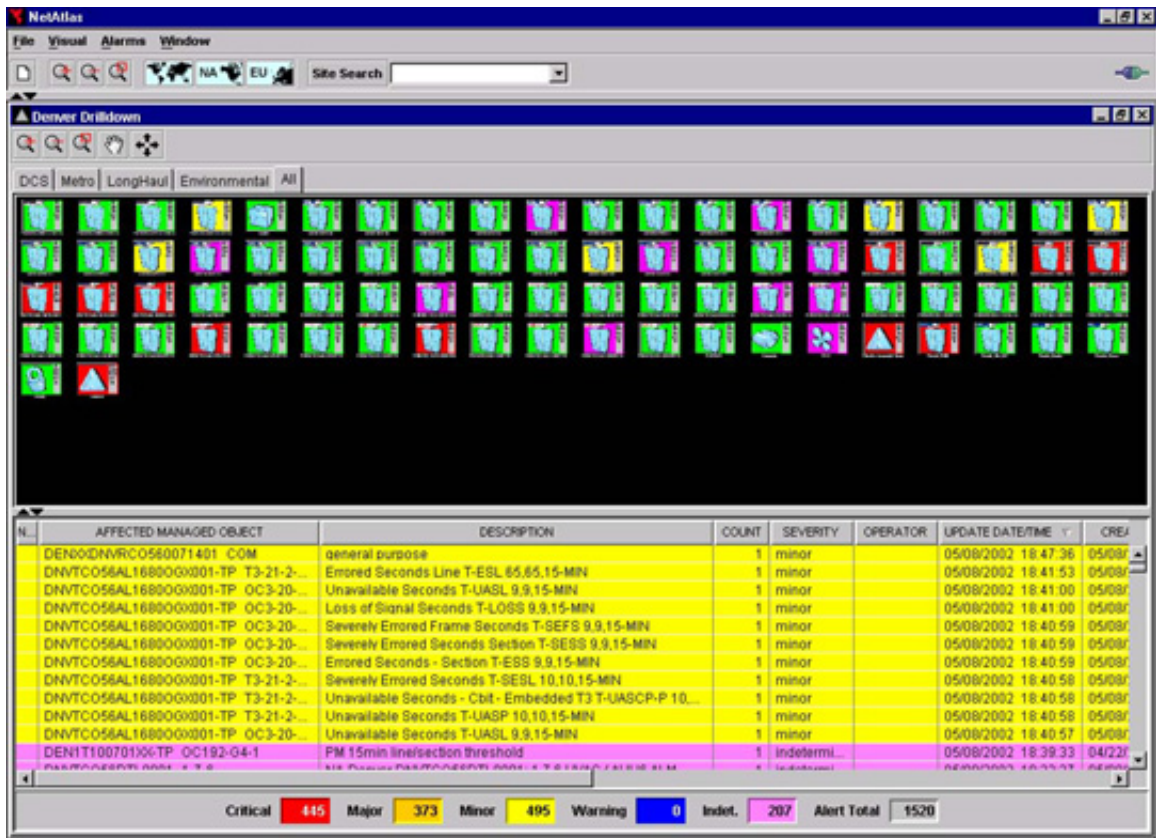
[Level 3 Communications, Inc.](#)

Broomfield, CO

Level (3) Communications, a worldwide telecommunications company based in Broomfield, Colorado, monitors network availability in a visual map format in their Network Operations Center (NOC). They have developed an application, NetAtlas, that will display geographical maps plotting the Level(3) network and showing the current status of the network. NetAtlas allows a user to "drill down" from higher levels of the network to specific locations and particular pieces of equipment on the network.

This project is a GUI extension to NetAtlas, providing a schematic view of the devices contained in any location, information about each device in the location, and each device's current alarm status. Alarms represent the malfunctions occurring in the location environment and devices. The status of each device is represented by the most critical alarm occurring on that piece of equipment. The project was implemented in Java.





Department of Computer Science  
 College of Engineering and Applied Science  
 University of Colorado Boulder  
 Boulder, CO 80309-0430 USA

Questions/Comments?  
 Send email to  
[Bruce.Sanders@Colorado.EDU](mailto:Bruce.Sanders@Colorado.EDU)

Engineering Center Office Tower  
 ECOT 717  
 +1-303-492-7514  
 FAX +1-303-492-2844

XHTML 1.0/CSS2

©2012 Regents of the University of Colorado  
 Privacy · Legal · Trademarks

May 5, 2012 (14:07)