

WINDOWS FORMS FRAMEWORK USING C#.NET



CSCI – 4448 / 6448

October 23, 2008

Neha Shanbhag

Ajinkya Kulkarni

Mark Lewis Prazen

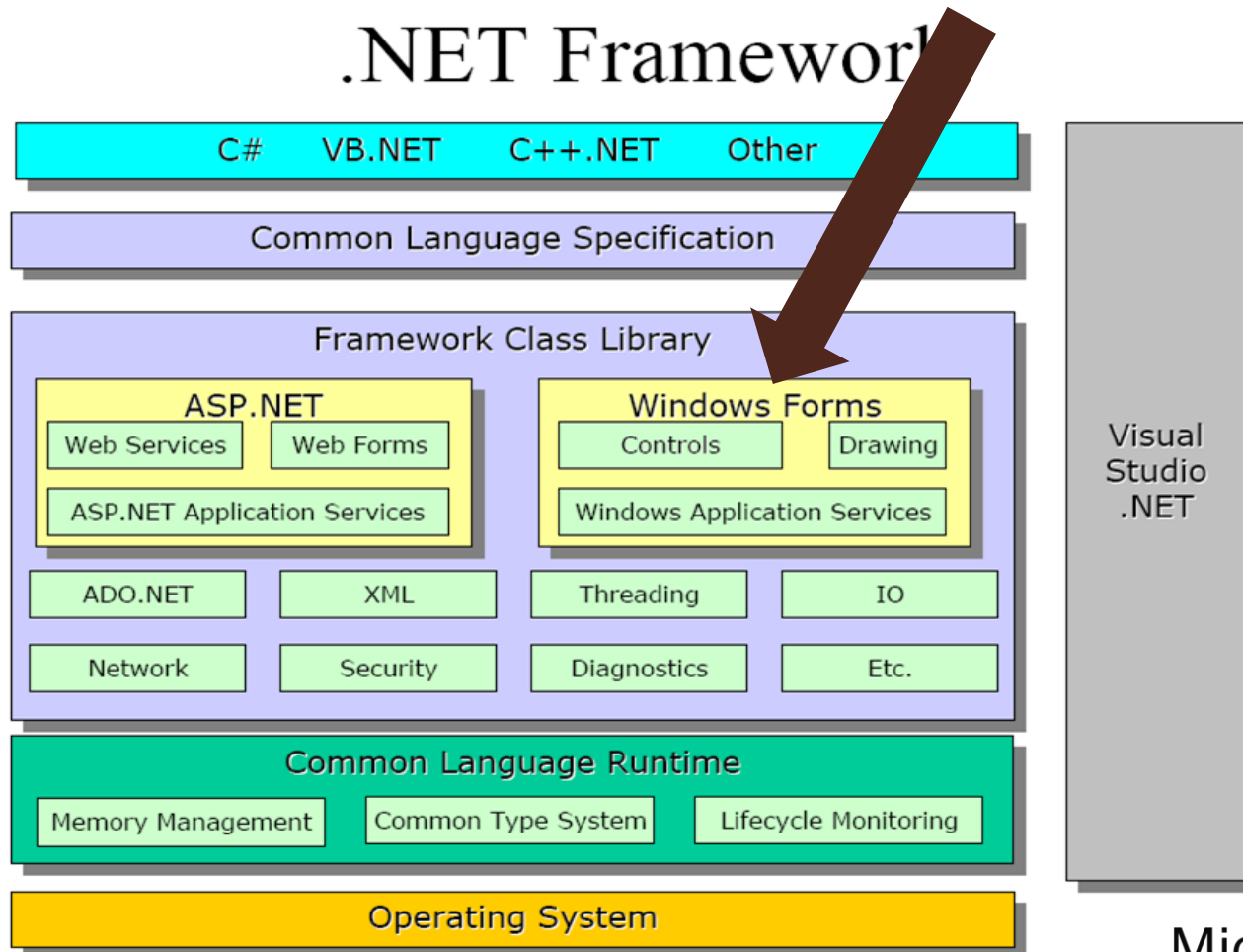
Kaustubh Sahasrabudhe

A bit of History & Background

- v1.0 released in 2002, v2.0 in 2005, now on v3.5
- A collection of technologies to:
 - Unite applications
 - Simplify development and deployment
- Three main elements:
 - Framework (CLR, FCL)
 - Products (Windows, Visual Studio, Office)
 - Services (WindowsForms, ADO.NET, ASP.NET)

.NET Architecture Overview

.NET Framework



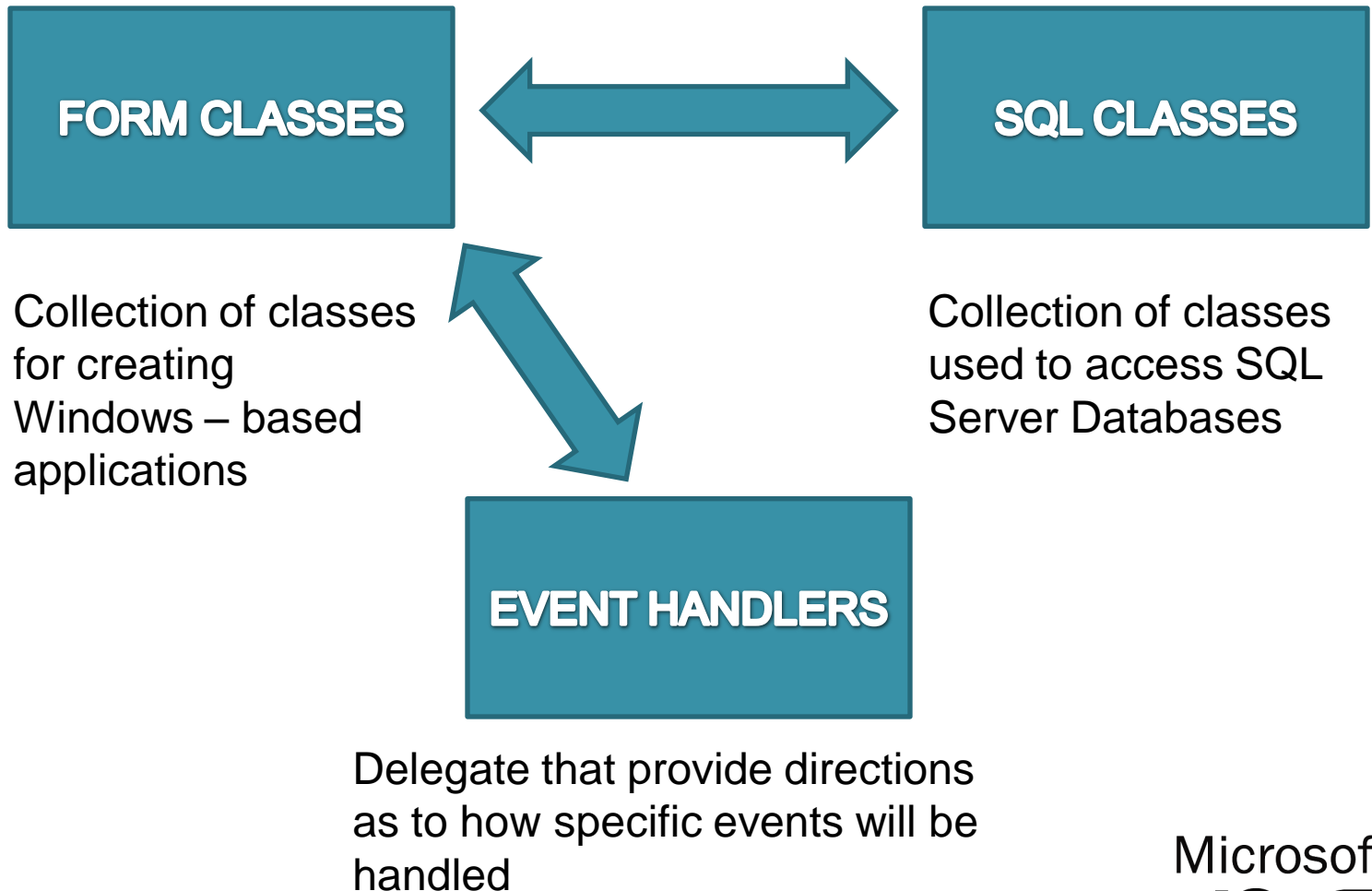
Introduction

- What is it?
 - A GUI API included as a part of Microsoft's .NET framework
 - Provides access to Microsoft windows interface elements
 - Used for creating event-driven applications
- Why?
 - An entrenched application in wide use with a substantial development community
 - Provides a graphical canvas for understanding how OO development works

The main services aka modules!

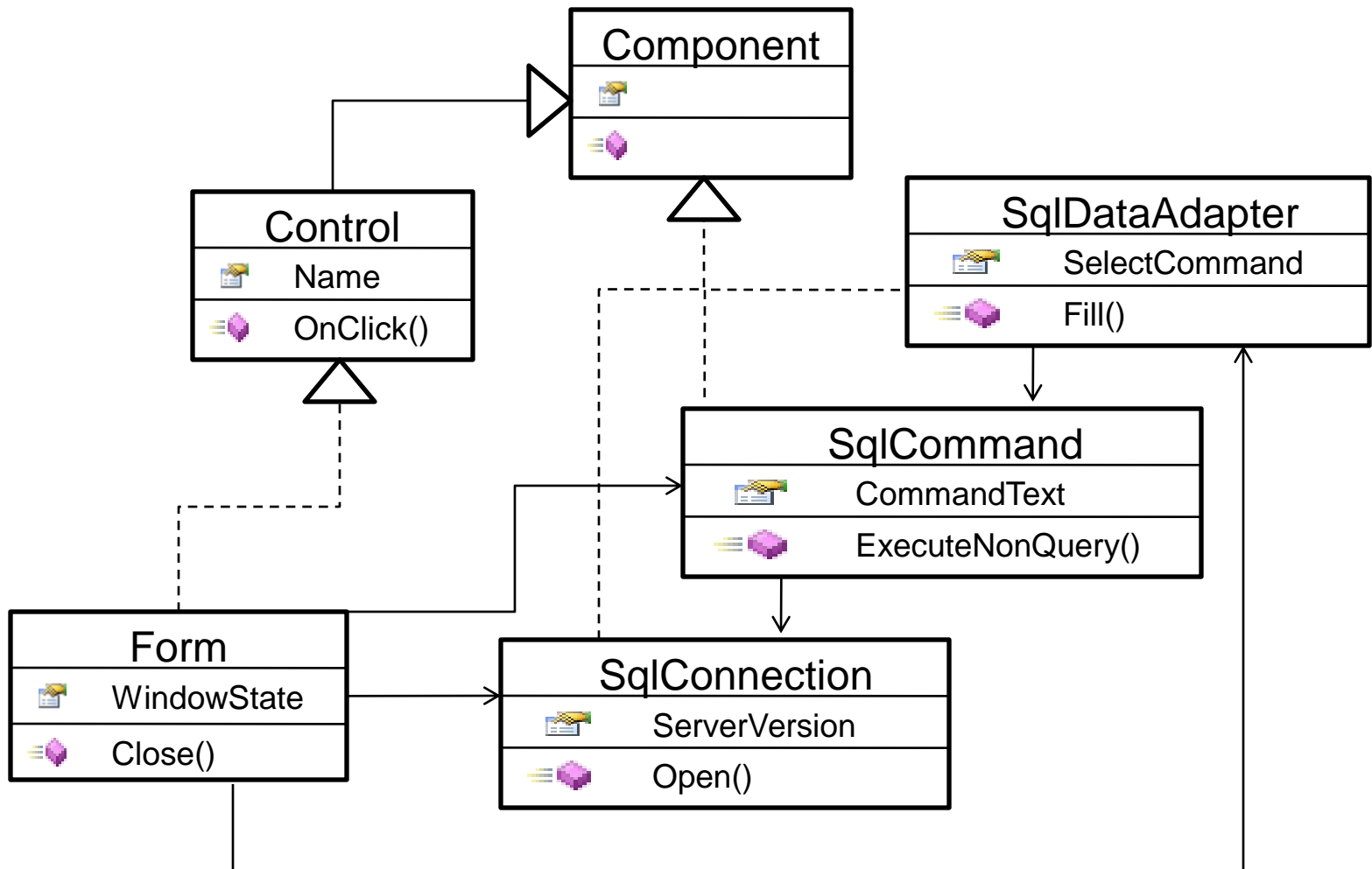
- Standard GUI components
 - System.Windows.Forms
- Supportive components and services
 - System.Drawing
 - System.EventHandler
- Other Application services like ADO.NET
 - System.Data.SqlClient
 - System.Data

High Level Design



Class Diagram

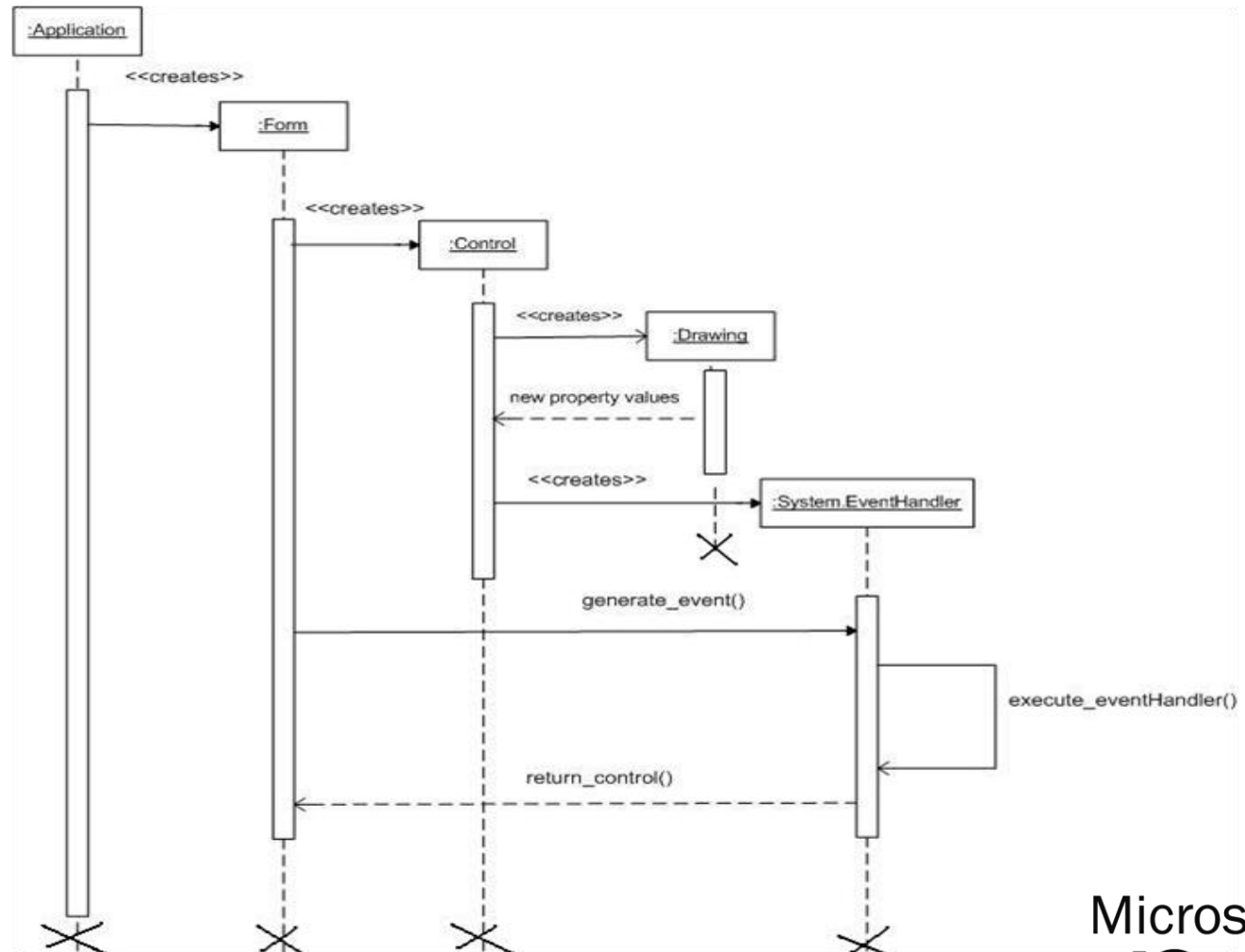
System.Data.SqlClient



System.EventHandler

- Delegate: The basis for events
- Similar to function pointers in C C++
- Allows programmer to encapsulate a reference to a method inside a delegate object
- Another way to achieve “Polymorphism”

Sequence Diagram EventHandler



Demo Application

- Desktop Database for Dr. Anderson to manage the grades of the students in the OOAD class
 - Demonstrates the use of Windows Forms and Controls
 - Utilizes event handlers to trigger actions based on control events
 - Interacts with database to store and import data

OO Concepts & Principles

- Polymorphism
 - Inheritance hierarchy
- Code to an interface
 - OnClick
- DRY
 - Delegation
- SRP
 - TextBox vs. TextBlock
- OCP
 - New service eg. Pie Menus
- LSP
 - EventHandlers

Conclusion / Evaluation

- Advantages

- Comprehensive form creation application
- Easy to learn and use with IDE
- Linkages to a broad framework provides robust tools and features

- Disadvantages

- Proprietary nature hinders portability. Applications not Mac or Linux compatible.
- MS resources increasingly more focused on web
- Framework imposes constraints on the application that might not be encountered in a more open and sparser architecture

Questions??

